

COMMUNITY EDUCATION (for General Public)

CONTINUING EDUCATION (for Health Care Professionals)

SEPTEMBER



- PROGRAM INFORMATION SESSION - FREE
- Explore our non-credit programs, meet the instructors, & take two mini-workshops: Hypnotherapy, Aromatherapy, Craniosacral Therapy, Medical Qigong, & Indigenous Wisdom Teachings Sept 10, Mon, 6-9p.m. FREE - pre-registration required



- CRANIOSACRAL THERAPY - LEVEL 1: THE FASCIA SYSTEM OF THE BODY & HEAD
- Nancy Witt, PT, MSW, CST-D & Einat Arian, ND, PhD, CST-D
- Sept 14-16: Fri, 1-8:30p.m. Sat & Sun, 8a.m.-5p.m. (23 CEUs, PDAs)
- Register by 8/29 - Receive the "early" discount
- Professional: \$475/\$570 • Alumni: \$425/\$510
- Student: \$345 • Retake: \$150



- QIGONG SELF-CARE: YI REN MEDICAL QIGONG & INTERNAL QI-ENERGY ACTIVATION
- Guan-Cheng Sun, PhD
- Sept 22-23 & Nov 10-11, Sat & Sun - Oct 14 & Dec 9, Sun, 9a.m.-5:30p.m. (42 CEUs, PDAs)
- Register by 9/5 - Receive the "early" discount
- Professional & Public: \$1,125/\$1,345
- Alumni: \$1,015/\$1,215 • Student: \$825 • Retake: \$395



- HYPNOTHERAPY: AWARENESS & INTEGRATION
- Mary Lee LaBay, PhD
- Sept 22-23 & Oct 20-21, Sat & Sun, 9a.m.-5p.m. (50 CEUs)
- Register by 9/7 - Receive the "early" discount
- Professional & Public: \$635/\$765
- Alumni: \$575/\$685 • Student: \$465 • Retake: \$225



- HATHA YOGA: FOR BEGINNING TO INTERMEDIATE YOGIS
- Lisa Schmidt, CYT, RYT E-500
- Sept 27-Dec 6, Thurs, 6-7:15p.m. (12.5 HRs)
- Public: \$95



- SUPPLEMENTS & WESTERN HERBS FOR LAC'S
- Marilyn Walls, MS Nutrition
- Sept 29, Sat, 9a.m.-5p.m. (6.5 CEUs, PDAs)
- Professional: \$175 • Alumni: \$155 • Student: \$50



- CREATE A FULL PRACTICE: LEARN THE SECRETS OF NON-VERBAL MEDICAL COMMUNICATION
- Jason Luban, MS, LAc
- Sept 30, Sun, 8:30a.m.-6p.m. (8 CEUs, PDAs)
- Register by 9/14 - Receive the "early" discount
- Professional: \$125/\$150 • Alumni: \$115/\$135
- Student: \$50

OCTOBER



- THE ESSENTIAL OIL MEDICINE CABINET
- Jimm Harrison, Cosmetologist & Certified Aromatherapist
- Oct 4, Thurs, 6-9p.m. (2.5 CEUs, PDAs)
- Professional & Public: \$65 • Alumni: \$55
- Student: \$35

- ESSENTIAL OIL THERAPY - FOUNDATIONS
- Jimm Harrison, Cosmetologist & Certified Aromatherapist
- Oct 5-7: Fri, 4-8p.m. Sat & Sun, 9:30a.m.-5:30p.m. (17 CEUs, PDAs)
- Register by 9/21 - Receive the "early" discount
- Professional & Public: \$375/\$445
- Alumni: \$335/\$395 • Student: \$275 • Retake: \$135



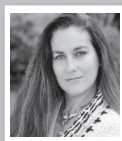
- THE COLLAGE CONNECTION: MINDING THE GOLD WITHIN
- Karen Stefano, EdM, MA, LPC, NCC
- Oct 5-6: Fri, 7-9:30p.m. Sat, 9:00a.m.-5:00p.m. (8.5 CEUs, PDAs)
- Professional & Public: \$195
- Alumni: \$175 • Student: \$70



- AUTUMN RETURNS: STRATEGIES FOR RELEASING & HARVESTING OUR ENERGY
- Michael Byrne, ND, MA
- Oct 6, Sat, 9a.m.-5p.m. (7 CEUs, PDAs)
- Professional & Public: \$125
- Alumni: \$115 • Student: \$50



- OHM THERAPEUTICS: SOUND HEALING FOUNDATIONS
- Samantha Jennings, Dr. TCM, RAC
- Oct 6-7, Sat & Sun, 9a.m.-6p.m. (15 CEUs, PDAs)
- Register by 9/12 - Receive the "early" discount
- Professional: \$315/\$375
- Alumni: \$275/\$335 • Student: \$95



- INDIGENOUS WISDOM TEACHINGS: WALKING THE INNER LANDSCAPE - SOURCING FROM WITHIN
- Lauren Nalder, BSc
- Oct 10, 17 & 24, Wed, 6-9p.m. (8 CEUs, PDAs)
- Register by 9/26 - Receive the "early" discount
- Professional & Public: \$175/\$205
- Alumni: \$155/\$175 • Student: \$125



- THE MANDALA: A JOURNEY OF AWAKENING
- Laurie Bell, BME, HTPA, RMT
- Oct 13, Sat, 9:30a.m.-4p.m. (5 CEUs)
- Professional & Public: \$75
- Alumni: \$65 • Student: \$65



- HYPNOTHERAPY: TRANSPERSONAL DISCOVERY
- Mary Lee LaBay, PhD
- Oct 13-14 & Nov 10-11, Sat & Sun 9a.m.-5p.m. (50 CEUs)
- Register by 9/28 - Receive the "early" discount
- Professional & Public: \$635/\$765
- Alumni: \$575/\$685 • Student: \$465 • Retake: \$225



- CULTIVATING A HEALING PRESENCE: EMBODYING THE HEART OF A HEALER
- Deb Zucker, ND, LMP
- Oct 13-14, Sat & Sun, 9a.m.-5p.m. (13 CEUs, PDAs)
- Professional: \$289 • Alumni: \$259 • Student: \$95



- CRANIOSACRAL THERAPY - LEVEL 1: THE FASCIA SYSTEM OF THE BODY & HEAD
- Nancy Witt, PT, MSW, CST-D & Einat Arian, ND, PhD, CST-D
- Oct 19-21: Fri, 1-8:30p.m. Sat & Sun, 8a.m.-5p.m. (23 CEUs, PDAs)
- Register by 10/3 - Receive the "early" discount
- Professional: \$475/\$570 • Alumni: \$425/\$510
- Student: \$345 • Retake: \$150



- INTRODUCTION TO FOOT REFLEXOLOGY: A COUPLES WORKSHOP
- Drake Ewing, LAc
- Oct 20, Sat, 10a.m.-4:30p.m. (5.5 HRs)
- Public: \$149 (per couple) • Student: \$69 (per couple)



- AYURVEDIC HERBS & NUTRITION FOR ANTI-AGING & REJUVENATION
- Vivek Shanbhag, ND, MD Ayu, BAMS, CYED
- Oct 20, Sat, 9a.m.-5p.m. (6.5 CEUs, PDAs)
- Register by 10/3 - Receive the "early" discount
- Professional & Public: \$155/\$195
- Alumni: \$145/\$175 • Student: \$50



- FACE READING FOR DEEP PSYCHOLOGICAL INSIGHT & PERSONAL GROWTH
- KP Khalsa, DN-C, RH, CC
- Oct 27, Sat, 10a.m.-4p.m. (4.5 HRs)
- Public: Both days \$165, One day \$95
- Student: Both days \$85, One day \$50
- (See Sunday's seminar below)

- NATURAL HOME REMEDIES & ACUTE CARE
- KP Khalsa, DN-C, RH, CC
- Oct 28, Sun, 10a.m.-4p.m. (4.5 HRS)
- Same fees as for seminar on Saturday, Oct. 27



- TRADITIONAL AMAZONIAN MEDICINE: A VIEW INTO THE INDIGENOUS COSMOVISIONARY HEALING SYSTEM OF THE RAINFOREST
- Aubrey Bamdad
- Oct 28, Sun, 10a.m.-5p.m. (5 CEUs)
- Register by 10/24 - Receive the "early" discount
- Professional & Public: \$99/\$119
- Alumni: \$89/\$109 • Student: \$50

NOVEMBER



- HYPNOTHERAPY: TRANSFORMATION & HEALING
- Mary Lee LaBay, PhD
- Nov 3-4 & Dec 8-9, Sat & Sun, 9a.m.-5p.m. (50 CEUs)
- Register by 10/19 - Receive the "early" discount
- Professional & Public: \$635/\$765
- Alumni: \$575/\$685 • Student: \$465 • Retake: \$225



- INDIGENOUS WISDOM TEACHINGS: TRACKING THE ENERGY BODY - LEVEL I
- Lauren Nalder, BSc
- Nov 4, Sun, 9a.m.-6:30p.m. (8 CEUs, PDAs)
- Register by 10/21 - Receive the "early" discount
- Professional & Public: \$175/\$205
- Alumni: \$155/\$175 • Student: \$125



- ESSENTIAL OIL THERAPY - CHEMISTRY & BIOLOGY
- Jimm Harrison, Cosmetologist & Certified Aromatherapist
- Nov 9-11: Fri, 4-8p.m. Sat & Sun, 9:30a.m.-5:30p.m. (17 CEUs, PDAs)
- Register by 10/26 - Receive the "early" discount
- Professional & Public: \$375/\$445
- Alumni: \$335/\$395 • Student: \$275 • Retake: \$135



- NATUROPATHIC PRIMARY CARE UPDATE: AN INTEGRATIVE APPROACH - WANP/BASTYR FALL CONFERENCE
- Nov 10-11, Sat-Sun, 8:30a.m.-5p.m. (6 CEUs each day)
- Register by 10/21 - Receive the "early" discount
- WANP Member: Both days \$288/\$328
- One day: \$188/\$218
- Non-Member: Both days \$388/\$448
- One day: \$258/\$298
- Full-time Student or 1st Year Grad: \$50



- BASIC CADAVER ANATOMY
- Becky Love, DVM
- Nov 10-11, Sat & Sun, 1:30-4:30p.m. (6 CEUs)
- Professional: \$275



- QUICK & EASY WHOLE FOODS COOKING WITH BEAN & GRAINS
- Patrice Savery, MA
- Nov 17, Sat, 9:30a.m.-1:30p.m. (4 HRs)
- Public: \$65 • Student: \$45



- THERAPEUTIC YOGA: HEALING FROM CHRONIC PAIN & ILLNESS
- Robin Rothenberg, Certified Yoga Therapist
- Nov 17, Sat, 10a.m.-5p.m. (5.5 CEUs, PDAs)
- Professional & Public: \$125
- Alumni: \$95 • Student: \$50



- INDIGENOUS WISDOM TEACHINGS: TRACKING THE ENERGY BODY - LEVEL II
- Lauren Nalder, BSc
- Nov 17-18: Sat & Sun, 9a.m.-6p.m. Nov 28: Wed, 6-9p.m. (18 HRs)
- Register by 10/28 - Receive the "early" discount
- Professional & Public: \$425/\$505
- Alumni: \$385/\$465 • Student: \$305



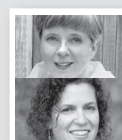
- SHONISHIN: JAPANESE PEDIATRIC "NON-INSERTIVE" ACUPUNCTURE
- Brenda Loew, MAC, EAMP
- Nov 18, Sun, 9a.m.-5p.m. (6.5 CEUs, PDAs)
- Professional: \$175 • Alumni: \$155 • Student: \$50



- A HISTORIC JOURNEY INTO CHINESE MEDICINE THROUGH HUANG DI NEI JING & SHANG HAN LUN
- Hong Yu, DAOM, LAc
- Nov 18, Sun, 9a.m.-6p.m. (7.5 CEUs, PDAs)
- Professional: \$175 • Alumni: \$155 • Student: \$50



- ESSENTIAL OIL THERAPY - THERAPEUTIC PROPERTIES
- Jimm Harrison, Cosmetologist & Certified Aromatherapist
- Nov 30-Dec 2: Fri, 4-8p.m. Sat & Sun, 9:30a.m.-5:30p.m. (17 CEUs, PDAs)
- Register by 11/16 - Receive the "early" discount
- Professional & Public: \$375/\$445
- Alumni: \$335/\$395 • Student: \$275 • Retake: \$135



- CRANIOSACRAL THERAPY - LEVEL 2: THE BONES OF THE SKULL, FACE & MOUTH
- Nancy Witt, PT, MSW, CST-D & Einat Arian, ND, PhD, CST-D
- Nov 30-Dec 2: Fri, 1-8:30 p.m. Sat & Sun, 8a.m.-5p.m. (23 CEUs, PDAs)
- Register by 11/14 - Receive the "early" discount
- Professional: \$475/\$570
- Alumni: \$425/\$510 • Student: \$345 • Retake: \$150



- OPENING TO THE SOURCE: MODULES 1 & 2
- Dan Bensky, DO & Charles "Chip" Chace, LAc
- Module I: Nov 30-Dec 2: Fri, 6-9 p.m. Sat & Sun, 9a.m.-5p.m. (15 CEUs, PDAs)
- Module II: Jan 11-Jan 13: Fri, 6-9 p.m. - Sat & Sun, 9a.m.-5p.m. (15 CEUs, PDAs)
- Professional: \$989 • Alumni: \$889 • Student: \$189

REGISTRATION

TO REGISTER: Due to the volume of phone calls we receive, we prefer that you submit your registration online, if possible. Thank you. Online: www.Bastyr.edu/Continuing-Education (Visa, Mastercard, Discover and American Express) Mail: Bastyr University Continuing Education, 14500 Juanita Drive NE, Kenmore, WA 98028 * Call: (425) 602-3152 E-Mail: continuinged@bastyr.edu

CANCELLATION, TRANSFER & REFUND POLICY: Please submit your request in writing (email or fax). Unless otherwise specified in the individual course descriptions, cancellations or transfers made up to 14 calendar days before the first day of the course will result in a full refund, less a \$35 processing fee or 20 percent of tuition, whichever is less. No refunds are granted for cancellations made with less than the 14-day notice, nor for home study courses once the registration & payment have been processed. Returned checks will be assessed a \$28 fee. Participants registered for the full course will not be refunded for any missed sessions & may not receive certificates of completion for partial completion of a seminar. Bastyr reserves the right to cancel courses with insufficient enrollment, in which case a full refund will be granted to those registered.

Visit our web page for detailed course descriptions, presenter bios, or to register:

WWW.BASTYR.EDU/CONTINUING-EDUCATION Or contact us: continuinged@bastyr.edu 425-602-3152